

**PLANT LIST**

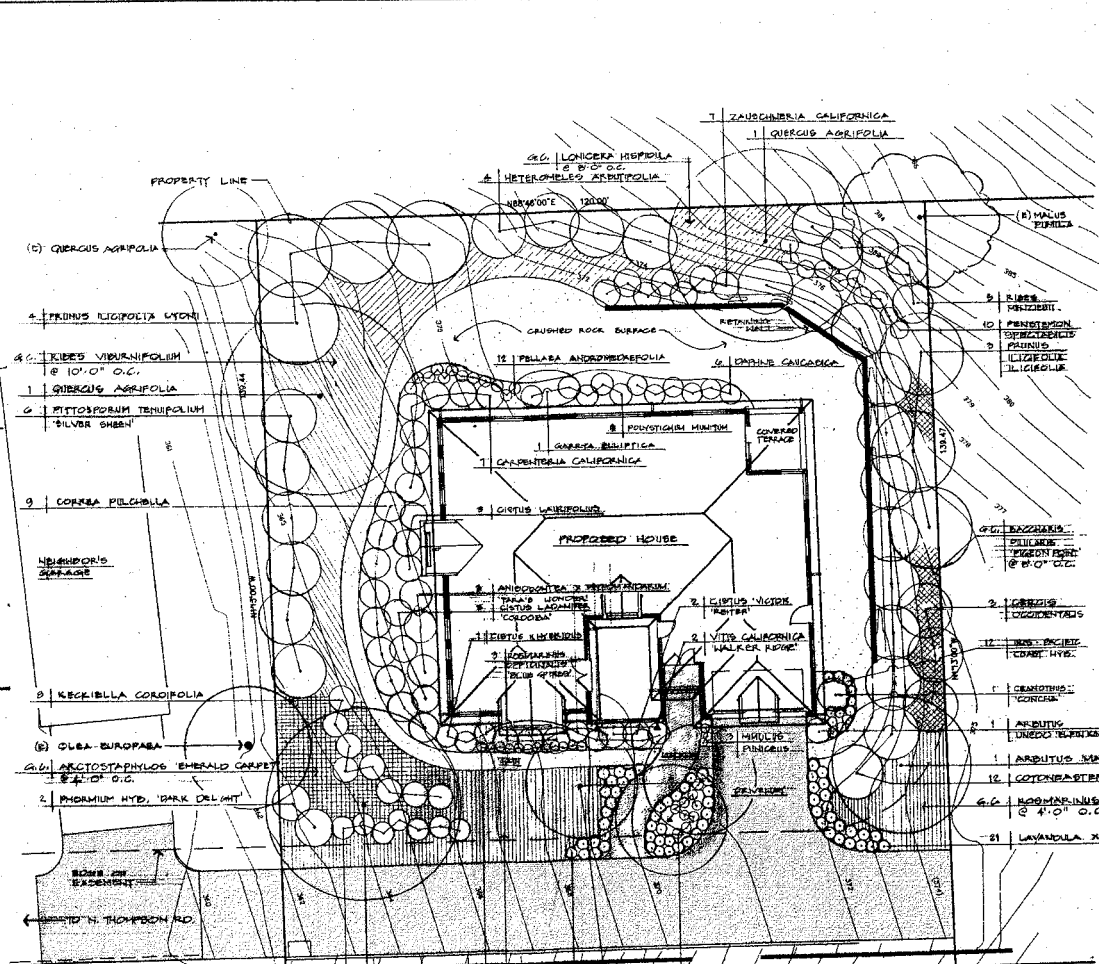
QUANTITY	SIZE/CONDITION	BOTANICAL NAME	COMMON NAME
<b>TREES</b>			
1	15 GAL	ARBUTUS STRATA	ARBUTUS
1	15 GAL	CRATAEGUS PHAENOPYLIUM	WAHSONGON CHERRY
1	15 GAL	QUERCUS AGRIIFOLIA	COAST LIVE OAK
1	15 GAL	QUERCUS KELLOGGII	BLACK OAK
<b>SHRUBS</b>			
3	3 GAL	ANISODONTEA	CAPE MALLOW
1	3 GAL	HYDRANGEA	DAISY
1	3 GAL	ARBUTUS UNEDO	EUROPEAN HONEY SUCKLE
7	3 GAL	CARPENTERIA CALIFORNICA	BUSH ANEMONE
1	3 GAL	GRANATHEUS	CALIFORNIA LILAC
3	1 GAL	CELOSIA COCCONIFOLIA	WESTERN REDBUD
3	1 GAL	CISTUS LAUREOLUS	ROCK ROSE
1	15.3 GAL	CISTUS HYPERICUS	MATE ROSEWOOD
2	1 GAL	CISTUS VICTOR REITER	ROCK ROSE
1	15.3 GAL (MAX)	CORREA PILICHBLLA	AUSTRALIAN SCARLET FEVERFLOWER
1	1 GAL	DAPHNE CALIFORNICA	FLORIDA DAPHNE
1	3 1/2 GAL	GARRYA ELIPTICA	COAST SAUTASSEL
1	1 GAL	HECATEA CORDIFOLIA	HEART-LEAVED FETTERION
1	1 GAL	HIPPURIS CARDINALIS	SCARLET FEVERFLOWER
7	1 GAL	HIPPURIS LONGIFLORA RUTILUS	RED HONEY SUCKLE
1	4 POT	HIPPURIS PLANCIS	RED HONEY SUCKLE
1	1 POT	PRODRUM DANEL DESERT	HYPERICUM
1	3 GAL	PITTOCOPUM TENUICOLLUM	TAMARISK
1	3 GAL	SILVER SHED	SILVER SHED
1	3 GAL	FRAXINUS LUCIDA LYONII	HOLLYLEAF CHERRY
1	3 GAL	FRAXINUS LUCIDA LYONII	CATALINA CHERRY
1	3 GAL	ROSEMOSS	ROSEMOSS
1	1 1/2 3 GAL	RESS VIBURNIFOLIUM	GOOSEBERRY
1	1 GAL (MAX)	ROSEMOSS OFFICINALIS	CATALINA ROSEHURD
7	1 TO 3 GAL	ZAUSCHNERIA CALIFORNICA	CALIFORNIA FLORIDA

QUANTITY	SIZE/CONDITION	BOTANICAL NAME	COMMON NAME
<b>GROUND COVER PERENNIALS FERNS &amp; VINES</b>			
1	1 GAL	ARCTOSTAPHYLOS	HAZLELEAF
1	1 GAL	EMERALD CARPET	EMERALD CARPET
1	1 GAL	BACCHARIS PILLARIS	BUSH
1	1 GAL	COTONEASTER DAMNARI	STREIBER'S FIELDING
20	AA	IRS - PACIFIC COAST HYBRID	COTONEASTER
63	4 POT	LAVANDELLA X INTERMEDIA	PACIFIC COAST IRS
1	1 GAL	PROVENCE	PROVENCE
1	1 GAL	LONGICORNA HERBULEA	LAVANDER
1	1 GAL (MAX)	PILLAEA ANDROMEDAIFOLIA	CORNER FERN
1	1 GAL (MAX)	POSITIONERBURNIA	SHAW'S POSITIONER
1	1 POT	POLYSTICHUM 'FANTASY'	SHAW'S POSITIONER
1	1 POT	ROSEMOSS OFFICINALIS	CHERRY
1	1 1/2 3 GAL	HAWTHORN CARPET	ROSEMARY
1	1 1/2 3 GAL	WALKER ROSE	WALKER ROSE

SUBSTITUTIONS IN GENUS, SPECIES, OR VARIETIES OF PLANT MATERIALS SHALL BE MADE ONLY UPON APPROVAL BY THE LANDSCAPE ARCHITECT.

**IRRIGATION**

THE LANDSCAPE CONTRACTOR SHALL DESIGN AND INSTALL A FULLY AUTOMATIC IRRIGATION SYSTEM TO PROVIDE FULL AND THOROUGH COVERAGE TO ALL NEWLY PLANTED AREAS SHOWN ON THE PLANTING PLANS. THE SYSTEM DESIGN SHALL ACCOMMODATE THE WATER REQUIREMENTS OF THE CALIFORNIA NATIVE MATERIALS AND ORNAMENTALS AND PROVIDE FOR SEPARATE VALVES FOR EACH EXPOSURE AND AS REQUIRED DRIP EMITTERS WITH FLEXIBLE TUBING SHALL BE INSTALLED AT EACH PLANT. IN AREAS DENSELY PLANTED WITH 4" SIZE MATERIALS, ONE EMITTER SHALL SURFACE FOR 2 TO 3 PLANTS. ALL EQUIPMENT SHALL BE INSTALLED IN ACCORDANCE WITH ALL ORDINANCES AND CODES OF THE CITY OF LAFAYETTE AND CONTRA COSTA COUNTY. ALL MAINLINE PIPES AND CONTROL VALVES SHALL BE INSTALLED IN SEPARATE SCHEDULE 40 PVC SLEEVES, NOMINAL TWO SIZES LARGER THAN THE IRRIGATION PIPE, AND NOT LESS THAN 4" IN DIAMETER. SLEEVES SHALL BE BURIED A MINIMUM OF 6" BELOW FINISHED GRADE AND BACKFILLED WITH GRAVEL NOT TO EXCEED 1/2 PARTICLE SIZE. NO LARGE ROCKS OR EXTRANEIOUS MATERIALS WILL BE USED IN TRENCH SLEEVES. A MINIMUM 14" BEYOND ALL PAVING, WALLS, ETC. THE CONTROLLER SHALL BE A HUNTER CC; INSTALL AS DIRECTED BY THE OWNER. PROVIDE TWO SETS OF KEYS TO THE CONTROLLER TO THE OWNER, AS WELL AS FULL INSTRUCTION ON THE OPERATION OF THE CONTROLLER. THE INSTALLER SHALL REVIEW THE PLANNED SYSTEM WITH THE OWNERS REPRESENTATIVE PRIOR TO INSTALLATION.



**NOTES**

REFER TO DRAWINGS BY SCHILL & MARTIN, INC. CIVIL ENGINEERS FOR ALL GRADINGS, DRAINAGE, RETAINING WALLS AND ALL OTHER LAND ALTERATIONS AND INFORMATION.

SOIL PRODUCTS: ALL SOIL PRODUCTS ARE AVAILABLE FROM AMERICAN SOIL PRODUCTS, INC., RICHMOND, CA (800-299-3000) OR SAN RAFAEL, CA (415-456-1361). IF OTHER SOURCES ARE USED, THEY MUST HAVE PRIOR APPROVAL OF THE LANDSCAPE ARCHITECT. SUBMIT WRITTEN STATEMENTS GIVING LOCATION OF PROPERTIES FROM WHICH TOPSOIL IS OBTAINED.

TOPSOIL: IF ON SITE SOIL DOES NOT EXHIBIT THE TOPSOIL QUALITIES LISTED BELOW, THE CONTRACTOR SHALL APPROVE THE OWNER. IT IS RECOMMENDED THAT SUBSTANDARD TOPSOIL BE REPLACED WITH IMPORTED TOPSOIL TO A DEPTH OF 1'-0". ADD TOPSOIL IN AREAS WHERE GRADES ARE LOWER THAN REQUIRED. REPLACE WITH 'GENERAL LANDSCAPE BLENDED SOIL'.

TOPSOIL MUST BE A FERTILE, FRABLE SOIL OF A LOAMY CHARACTER, WHICH CONTAINS A NORMAL AMOUNT OF ORGANIC MATTER WITHOUT THE ADDITION OF HUMUS OR SOIL AMENDMENTS. IT SHALL BE FREE OF ANY REFUSE, HEAVY OR STIFF CLAY, HARD DIRT CLODS, STONES LARGER THAN 3/4" IN DIAMETER, NOXIOUS WEED, BERLUDA GRASS, NUT GRASS AND OTHER DELETERIOUS MATERIALS. TOPSOIL SHALL ALSO BE FREE FROM TOXIC AMOUNTS OF EITHER ACID OR ALKALINE CHEMICALS AND SHALL BE CAPABLE OF SUSTAINING PLANT LIFE.

AMENDMENTS: PREPARE SOIL AS FOLLOWS: SPREAD SOIL WITH A 3" LAYER OF ORGANIC CLOD BREAKER AND TILL THOROUGHLY AND UNIFORMLY TO A DEPTH OF 8"-12". INsofar AS POSSIBLE, DO NOT DISTURB ROOTS OF EXISTING MATURE TREES.

WEED CONTROL: NO TOXIC CHEMICALS SHALL BE EMPLOYED ON THE SITE. ERADICATE WEEDS AND UNDESIRABLE HERBACEOUS PLANTS BY APPLYING 'SOYBE' HERBICIDE (PENGLOXONE ACID) ACCORDING TO MANUFACTURERS' INSTRUCTIONS TO ENSURE NON-EMERGENCE OF WEEDS. FOLLOW 'SOYBE' APPLICATION IMMEDIATELY WITH 'BIO-WEED' PRE-EMERGENT AND FERTILIZER (CORN GLUTIN MEAL). ENVIRONMENTALLY SAFE PRODUCTS ARE AVAILABLE FROM BIOSCAPE, INC., 4363 BOGGS AVENUE, PETALUMA, CA 94952, 877-245-7277, www.bioscape.com

LANDSCAPING: ALL PLANTING AREAS SHALL BE MULCHED WITH A 2" DEEP LAYER OF REDWOOD MULCH (aka GORILLA HAIR), TOPPED BY A MINIMUM 2" LAYER OF CLEAR PRK BARK MULCH. AFTER PLANTS ARE INSTALLED, IN AREAS WITH 4" POTTED PLANTS, PLACE MULCH 8" TO 12" FROM PLANTS.

PLANT QUALITY: NO PLANT MATERIAL WILL BE ACCEPTED WITH ROOT DEFECTS, INCLUDING KINKS, CRACKS, ROTBOLDS, OR OTHER DAMAGE THERE SHALL BE NO ROOTS LARGER THAN 1/4" IN DIAMETER AT THE PERIPHERY OF THE ROOT BALL. ALL PLANTS SHALL MEET THE SPECIFICATIONS OF FEDERAL, STATE AND COUNTY REGULATIONS REQUIRING INSPECTION FOR PLANT DISEASES, INSECTS, NOXIOUS WEEDS, AND OTHER PESTS AND ABNORMALITIES. ANY INSPECTION CERTIFICATES REQUIRED BY LAW MUST ACCOMPANY EACH SHIPMENT. INVOICE, MANIFEST OR ORDER OF STOCK, TRANSPORTING, HANDLING, DELIVERY AND STORAGE OF PLANTS SHALL BE CONDUCTED TO PROTECT AT ALL TIMES FROM HULLY, DESICCATION AND FREEZING. PROTECT CONTAINERS FROM SUN EXPOSURE. SINGLE-STEMMED TREES SHALL HAVE PROPER TRUNK TAPER AND ABILITY TO STAND WITHOUT SUPPORT; THE BRANCHING STRUCTURE OF TREES SHALL BE RADIALLY AND VERTICALLY WELL-BALANCED WITH BRANCHES ATTACHMENT TO THE TRUNK. TOP GROWTH SHALL EXHIBIT GOOD VIGOR TYPICAL FOR THE SPECIES AND THE SEASON, AS INDICATED BY LEAF COLOR AND SIZE, LENGTH OF TERMINAL GROWTH, AND COLOR AND CONDITION OF THE BARK. NONE OF THE PLANTS SHALL HAVE SERIOUSLY BROKEN, FROZEN, SHRIVELED OR DAMAGED LEADERS OR MAIN BRANCHES.

INSTALLATIONS: AT LEAST ONE PLANT IN EACH SPECIES SHALL BE TAGGED WITH IDENTIFICATION. LOCATION OF PLANTS IS DIAGRAMMATIC. ALL CONTAINER-GROWN PLANTS SHALL BE SET IN PLACE ACCORDING TO THE PLAN FOR APPROVAL OF THE OWNERS REPRESENTATIVE PRIOR TO INSTALLATION. PRUNE PLANTS ONLY TO REMOVE DAMAGED LEAVES, BRANCHES AND BRIGHT FLOWERS AND TO IMPROVE BRANCHING STRUCTURE AND SHAPE.

**LEGEND**

AA	AS AVAILABLE
GA	GALEON
G.C.	GROUND COVER
MAX	MAXIMUM
OC	ON CENTER
OT	ON CENTER
(E)	EXISTING
HYB.	HYBRID



**PLANTING PLAN**

1" = 16'

**PLANTING PLAN**

APRIL 1, 2005

Residence for

Landscape ARCHITECT

**EXAMPLE**  
**Landscape Plan #1**  
See submittal checklist for complete requirements.