



View of Las Trampas Ridge from the trail

## TRAIL RULES, REGULATIONS AND RESTRICTIONS

- Trails are open to the public from dawn to dusk.
- Alcoholic beverages and smoking are not permitted.
- Firearms, hunting, shooting, fireworks, fires of any type, including matches and lighters, are not permitted.
- All plant, wildlife and geological features are protected by laws. Do not capture, collect or harm.
- Dogs must be securely leashed and under the control of their owners at all times. Dog waste and trash must be carried out.
- With the exception of motorized wheel chairs, motorized vehicles of all types are prohibited.
- Respect private property and be considerate of neighbors and fellow trail users by keeping noise down.
- Cutting, breaking, defacing or disturbing a sign, fence, bench, or other city property located on trails is prohibited.
- Placing a rope, wire, mark, writing, or sign on a tree, plant or city structure located on, or next to a trail is not allowed.
- Bicycles are not permitted on trails that have been posted as unsafe for bicycle use.
- Bicycles shall be operated in a safe manner especially when sharing trails with pedestrians. Bicycle speed, on mixed-use trails shall not exceed 15 mph on straight aways and 5 mph around corners and hills. Call out when pedestrians are ahead.

Lafayette Municipal Code Chapter 8-22, contains a complete listing of the rules, regulations and restrictions applicable to all Lafayette trails. Violations will be subject to citations and fines.

### LAFAYETTE EMERGENCY & MAINTENANCE CONTACTS

Police Dispatch:	925.284.5010
Public Works:	925.934.3908
Parks, Trails & Recreation Dept.:	925.284.2232

### TO REPORT A MAINTENANCE ISSUE OR TO VOLUNTEER, DONATE, OR HELP WITH TRAILS:

Email the PTR Dept: [Trails@LoveLafayette.org](mailto:Trails@LoveLafayette.org)

### FOR GENERAL TRAILS INFORMATION:

<http://www.ci.lafayette.ca.us/>

### TO REPORT SUSPICIOUS ACTIVITY:

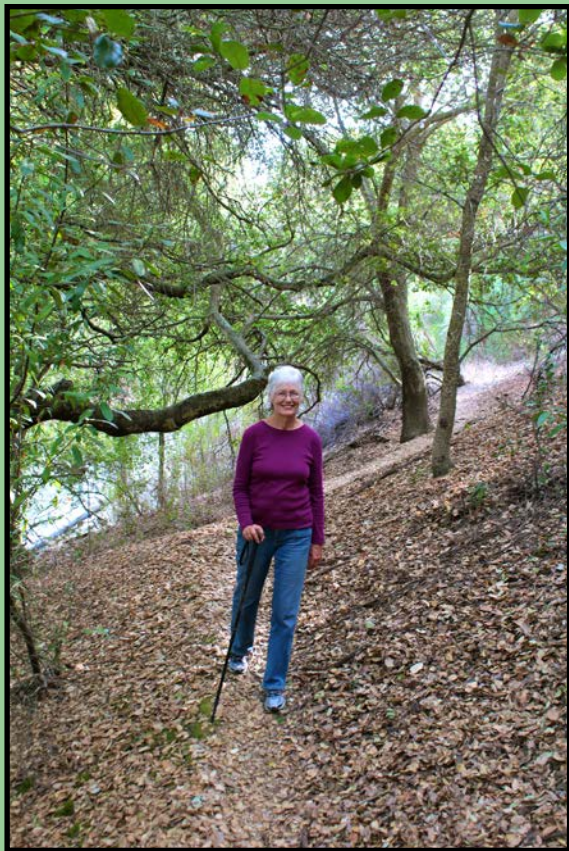
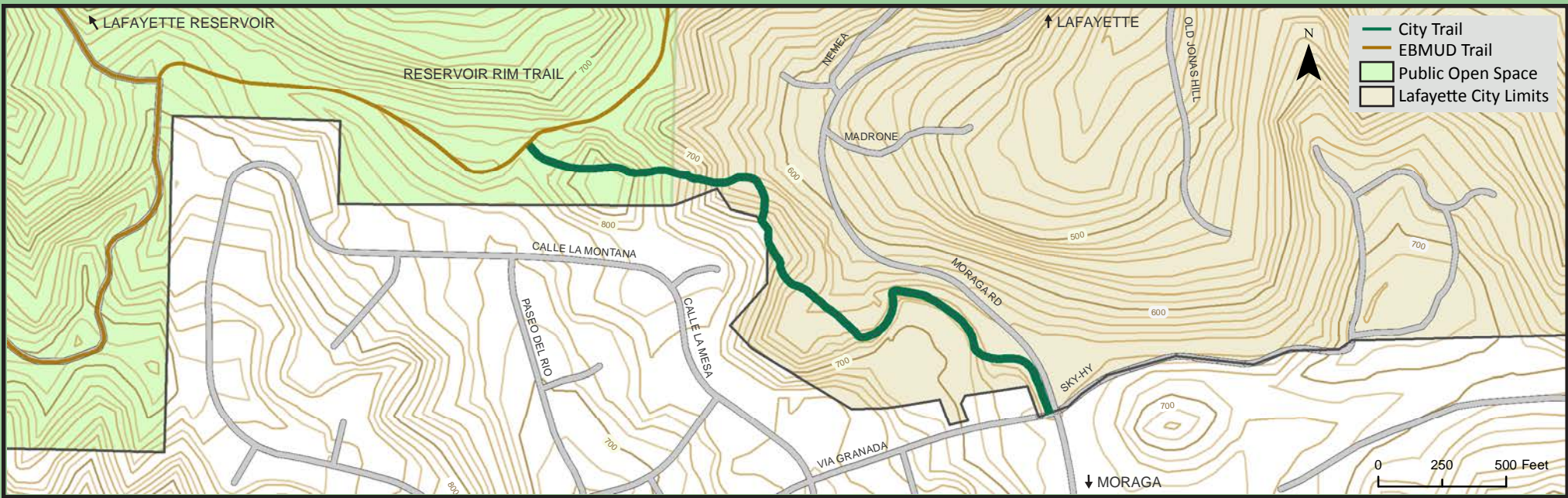
Email the Police Tip hotline: [94549tip@gmail.com](mailto:94549tip@gmail.com)

Created January 2014 by Trails Subcommittee

# Moraga Road to Reservoir Rim Trail



**CITY OF LAFAYETTE  
PARKS, TRAILS & RECREATION DEPT.**



## Moraga Rd. to Reservoir Rim Trail

The Moraga Road to the Reservoir Rim Trail provides direct access to the Lafayette Reservoir Rim Trail. The entrance from Moraga Road is just north of the intersection of Moraga Road and Via Granada. The dirt trail follows the hillside contours beneath oaks and bay laurels with gentle ups and downs. The last section of the trail climbs a steep hill, before you go through a gateway to EBMUD watershed land and from there to the Rim Trail. A complete map of the Rim Trail and all Lafayette Reservoir Trails may be obtained from EBMUD.

**One Way Length:** 0.62 miles

**Surface:** Dirt trail

**Terrain:** Undulating with final steeper hill

**Parking:** Park on Via Granada