

Slow Down Lafayette Review

Transportation & Circulation
Commission
September 15, 2025



Andy Comly
AComly@ci.Lafayette.ca.us

Lafayette Police Department
3471 Mt. Diablo Blvd
Lafayette, CA 94549

© 2025

Traffic Engineering



- Increased student safety at Springhill School – protected walkway
- Design underway for multi-use pathways on School Street & Topper Lane
- Consideration of Right Turn Restrictions for Pedestrian Safety along Mt Diablo
- Evaluation of six traffic calming applications
- Working relationship with police and school district on traffic-related complaints

Springhill at Pleasant Hill

Intersection challenges

- Red light running
- Not making it through the intersection

Actions taken

- Police presence & enforcement actions
- Traffic engineering: light timing changes
- SDL signs:
Red Light Strictly Enforced/School Zone

(Also, speed sign in front of Lafayette Elementary)



Public Awareness & Education

- Lawn Signs
 - 165 additional SDL lawn signs
 - PTA distribution starting in September
- Social Media
 - E-bike safety tips flyer & safety video
 - Planning e-bike educational flyers for the PTA
- Public Meetings
 - Safety presentations to schools in August & September

Slow Down Lafayette E-bike Safety Tips

eBikes have become very popular among youth and adults and summer is a great time to get outside and go for a ride. Here are a few reminders on how to ride an ebike safely:

Reminders:

- **Bicycle helmets:** Riders under 18 years old must wear an ASTM or CPSC rated bike helmet that is *properly fitted and fastened*.
- **Risk of injury:** An ebike's speed and weight can have kinetic energy 8X that of a regular bicycle, greatly increasing injuries in a crash.
- **Respect ebike speeds:** Ride the appropriate speed for the location. Give more space to other people (walking, riding, driving, playing etc.) and allow more braking time and distance.
- **eBike restrictions:** Class 1 (pedal assist) and Class 2 (throttle assist) ebikes go a maximum of 20 mph exclusively powered speed, and there are no age restrictions. Class 3 ebikes go up to 28 mph powered, and riders must be 16 or older and wear a helmet regardless of age.
- **Not legal:** eBikes without pedals, those modified to go faster than their original design limits, and dirt bikes are not street legal.



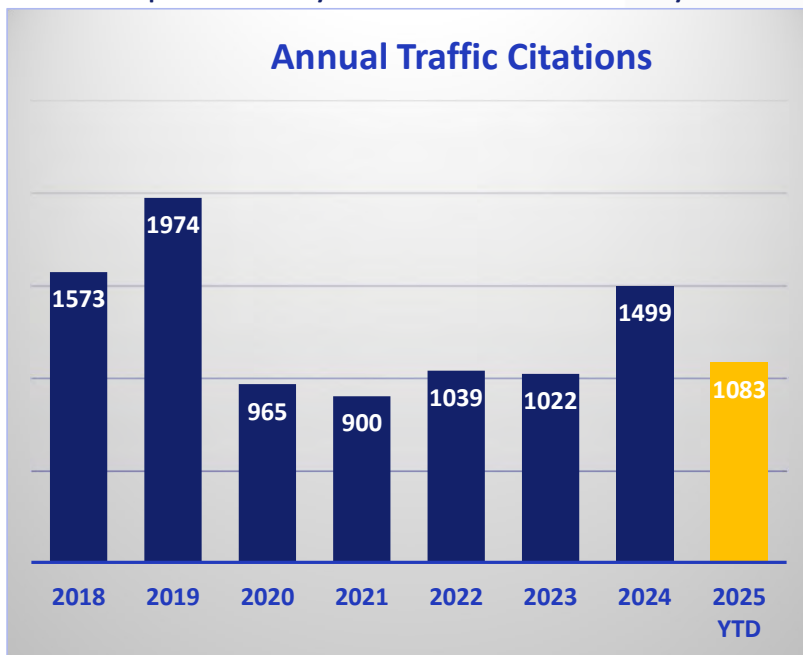
Slow Down Lafayette Program
Lafayette Police Department
94549Traffic@gmail.com | 925-299-3283
www.lovelafayette.org/slowdown



ECVC 332.5.21200-212141

Traffic Enforcement

August multi-jurisdiction support for enforcement saturation: 91 citations, 103 stops in one day
Takes place every three months in Lafayette



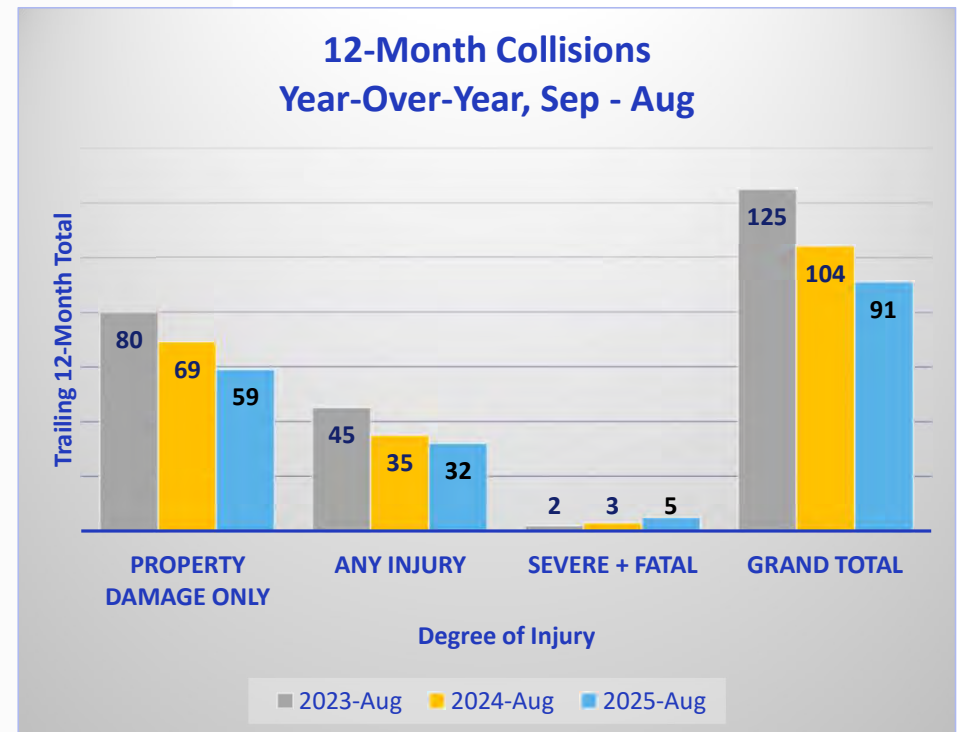
25% increase in year-to-date citations vs. same period last year



*Several traffic officers not working in July for personal reasons

Collisions – Our Measure of Success

- Based on SWITRS reports
 - Exchange-of-information (non-injury) not included
- Year-over-year changes
 - Total collisions: down 12.5%
 - Property damage: down 14%
 - Severe injury collisions: up by 2
 - No fatalities
- Many factors can affect these numbers



E-Bike Educational Presentation



GUIDELINES



E-BIKE CLASSES



OFF-ROAD DIRT
BIKES



NEW LAWS

E-Bike Guidelines

- Higher injury risk – heavier and faster
 - 5x – 10x+ the kinetic energy of a bicycle
- Be sure your child is trained and capable
- Must be pedal powered & maximum 750-watt motor
- Illegal to modify top speed
- Approved ***and properly fastened*** helmet required if under 18





E-Bike Classes

Class 1 & Class 2

- Helmet required if under 18
- Class 1 Pedal- or Class 2 throttle-assisted e-bike
- Max speed 20 mph
- Allowed on bike trails
- Same rules of the road as bicycles

Class 3

- 16+ years old
- 28 mph max speed
- Not allowed on bike trails

Electric Dirt Bikes

- Easy to order on-line, but...
- **Not street legal**
- 2x – 5x more powerful than e-bikes
- No pedal power
- 100 lbs
- 40+ mph
- → 75X more kinetic energy





Enforcement

- Collaborating with several cities on education & enforcement approaches
- Lafayette Police generally taking an educational approach with juveniles: Conversation with parents and child about laws & risks
- If education doesn't work
 - Citations for e-bike laws, traffic violations, no license > affects ability to get a license at 16
 - Confiscation or impoundment of bike for 30 days (\$\$\$)
- **Don't run from the police**
 - Unless you want a Misdemeanor or Felony Evading charge
- Worst case: child injured, and parents charged with child endangerment

Help us educate parents and children on the laws and risks



New State Laws

Increase in child injuries is leading to stricter laws

- Tightening rules on e-bikes
 - Age 16+ to buy, cannot sell speed-modifiable e-bikes
 - In the works: mandatory non-removable Class stickers, moped sub-classification
- Pilot program for age 16+ limit on Class 2
- Pilot program for age 12+ limit on Class 1 & 2

Teach children to self-promote safe riding or they may lose the privilege

Questions?



ANDY COMLY
ACOMLY@ACOMLY@CI.LAFAYETTE.CA.US



2025 Slow Down Lafayette

- Traffic engineering changes
- Public awareness & education
- Increased traffic enforcement
- E-Bike outreach